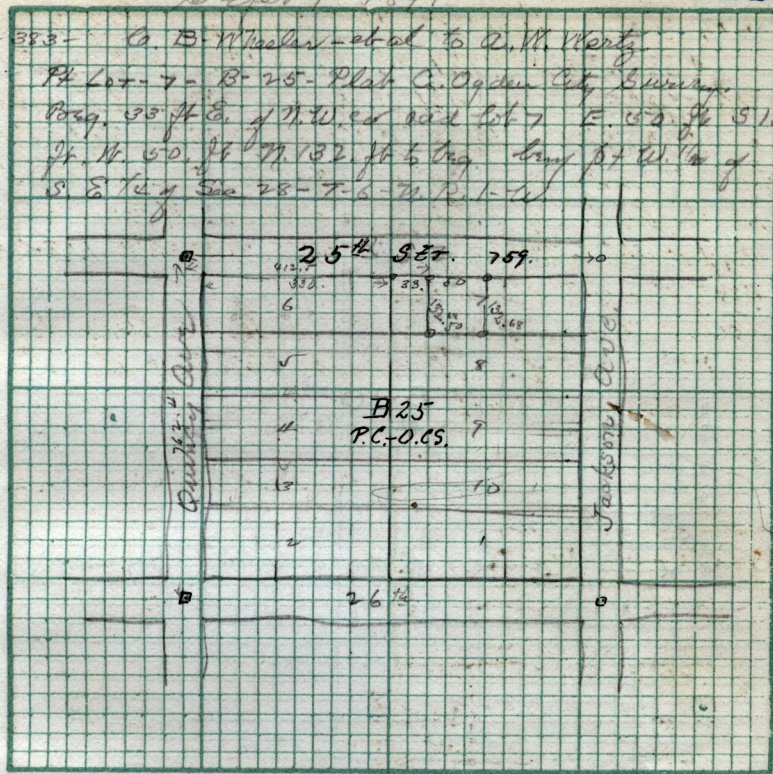


Sept 1 - 1891

139

11-383- Co. B. Wheeler - plat to A. W. Merty  
 Pt Lot - 7 - B-25 - Plat C. Ogden City Survey  
 Beg. 33 ft E. of N.W. cor. said lot 7 E. 50 ft S 182,  
 ft N 50. ft N 132 ft 5 in long long pt W. 1/4 of  
 S. E. 1/4 of Sec 28 - T. 6 - N. R. 1 - W.



Scale: ..... Chains per inch.

John Layman & John Baird chain

P. 446. Chas<sup>d</sup> Heath (pat) to W<sup>m</sup> L. Stuart. Oct 9 - 1882 -  
 Beg. 22 1/2 rods N. from N.E. cor. Sec 4 T. 6 - N. R. 2 - W - S. 80 rods  
 N 12 rods N 36 1/2 W 60 rods - N. 32 rods - E. 48 rods to log.  
 18 3/8. w. see survey on page 159. this looks